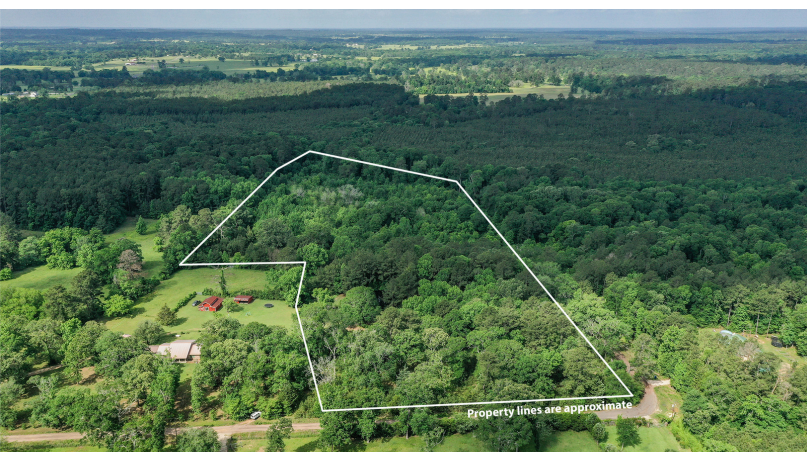
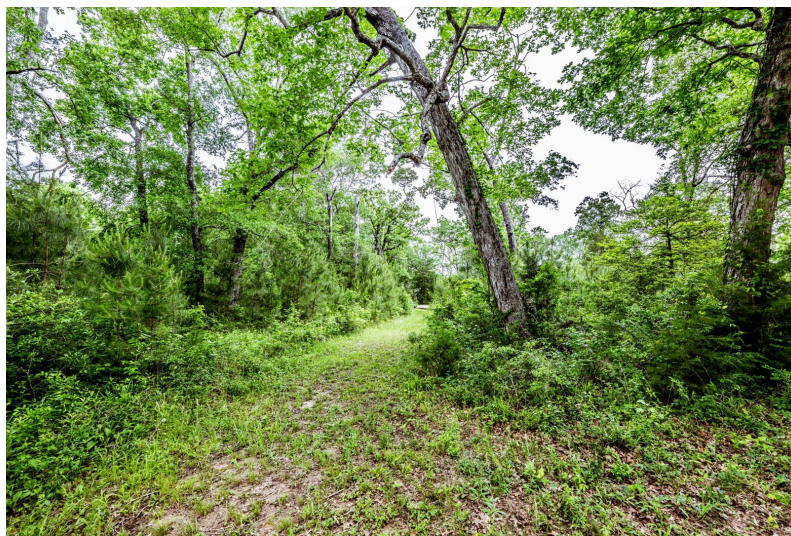


PARKER ROAD

NEW WAVERLY, TEXAS | SEASONAL CREEK & TWO PONDS | 16 +/- ACRES



PARKER ROAD



16± acres of wooded paradise with water features and hunting opportunities. Tucked away near the quiet end of Parker Road, this property offers peace, privacy, and minimal traffic. The front of the property features the highest elevation and road frontage on two sides—an ideal location for a custom home with scenic views. A haven for outdoor enthusiasts, the land is heavily wooded and rich with wildlife, making it perfect for whitetail deer hunting. A seasonal creek winds along the back boundary, nurturing a thriving habitat for game and enhancing the property's natural charm. Two ponds—one near the front and another in the center—offer opportunities for fishing, relaxation, or simply enjoying the outdoors. Whether you're looking to build your dream home, hunt, fish, or explore, this blank canvas invites your imagination to run wild.



Markham Realty
Selling Quality Texas Properties Since 1970
contact@markhamrealty.com
936-295-5989 | markhamrealty.com



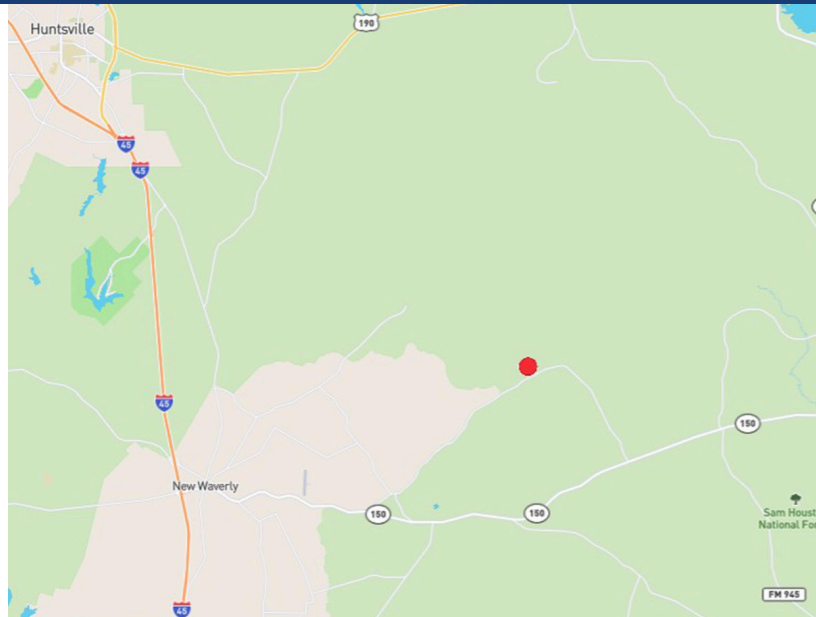
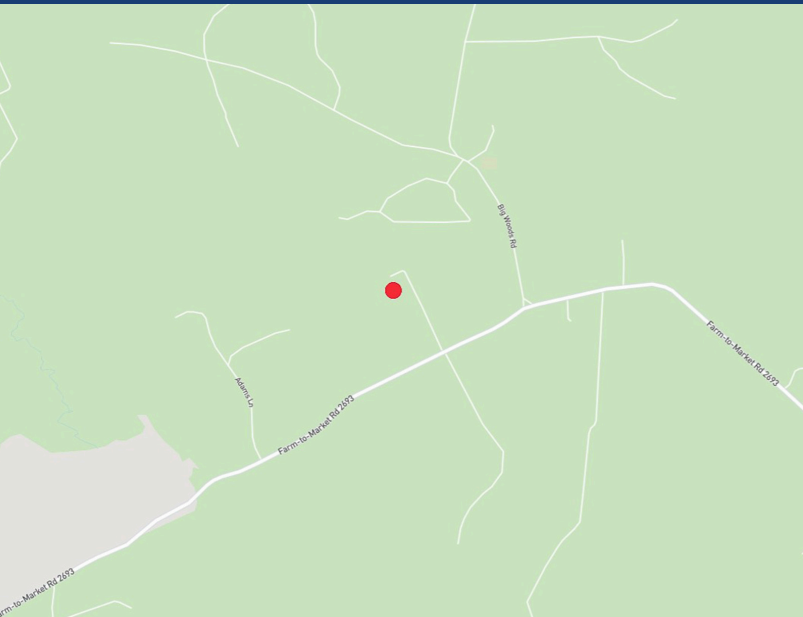
Scan here for additional
information & photos.



Information furnished is from sources deemed reliable, but is not guaranteed by Markham Realty, Inc. The offerings are subject to change in price, errors, omissions, prior sales, or withdrawal without notice. Square footage, acreage size and lot dimensions are approximate. All persons and firms named in this brochure are licensed brokers or salespersons. Markham Realty, Inc. will co-broker with any licensed Broker if Broker and/or agent accompanies his or her prospective buyer from the first (1st) showing forward.

PARKER RAOD NEW WAVERLY, TEXAS

***Markham
Realty***



Directions: From New Waverly, take SH 150 east. Turn left onto FM 2693. Turn left onto Parker Road. Property will be on your left.



***Markham
Realty***

Markham Realty
Selling Quality Texas Properties Since 1970
contact@markhamrealty.com
936-295-5989 | markhamrealty.com



Scan here for additional
information & photos.



Information furnished is from sources deemed reliable, but is not guaranteed by Markham Realty, Inc. The offerings are subject to change in price, errors, omissions, prior sales, or withdrawal without notice. Square footage, acreage size and lot dimensions are approximate. All persons and firms named in this brochure are licensed brokers or salespersons. Markham Realty, Inc. will co-broker with any licensed Broker if Broker and/or agent accompanies his or her prospective buyer from the first (1st) showing forward.